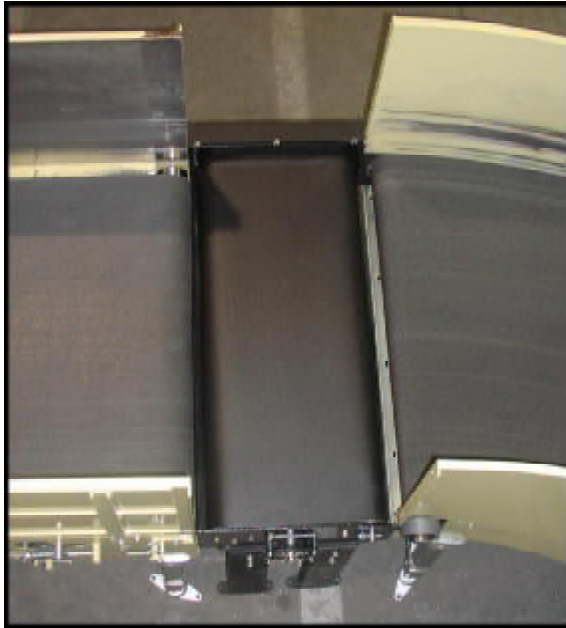




COMPACT • GAP • CONVEYOR



Fill the short wide gaps in your conveyor line...

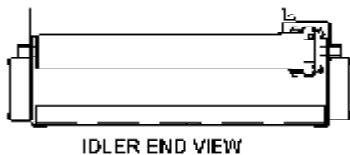
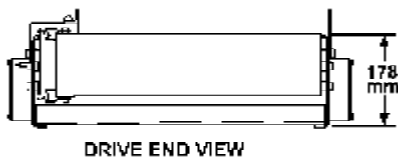
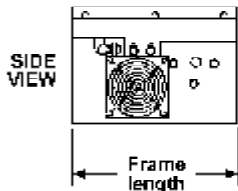
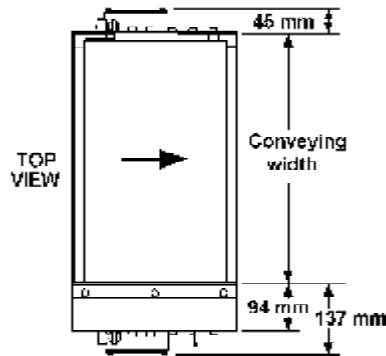
The Com-Flo™ from Portec Flomaster is the perfect solution to fill the short wide gaps in your conveyor line or for queuing or singulating products.

- Durable all-steel construction
- Portec's positive drive chain/belt system
- No end roll slip during cycling operations
- Low belt tension
- Internal motorized end pulley
- Available belt speeds up to 1.81 m/sec
- No special belt material required
- Perfect belt tracking without a V-guide
- Conveyor lengths from 318-622 mm
- Conveyor widths from 483-1016 mm

Model Dimensions

| MODEL | Conveying Width | Frame Length |
|------------|-----------------|--------------|
| 483CFL318 | 483 mm | 318 mm |
| 1000CFL318 | 1000 mm | 318 mm |
| 500CFL450 | 500 mm | 450 mm |
| 635CFL635 | 635 mm | 635 mm |
| 1016CFL635 | 1016 mm | 635 mm |

Note: The drive end roll with our standard 3.2 mm belt material is set back 17.1 mm from the frame end. The idler end roll with our standard 3.2 mm belt material is set back 21.6 mm from the frame end. The above list is only a small sample of the available model sizes from Portec. Contact Portec with your requirements.



For more information, contact:

HEADQUARTERS & FACTORY:

PORTEC FLOMASTER

One Forge Road (81212)

PO Box 589

Cañon City, CO 81215-0589 USA

Tel: +1(719) 275-7471

Fax: +1(719) 269-3750

Email: sales@portec.com

Web: www.portec.com

U.K. SALES OFFICE:

PORTEC INTERNATIONAL LTD.

Tel: +44(0) 116 224 3698

Fax: +44(0) 116 224 3698

Email: jimhempstock@portecgroup.fsnet.co.uk

GERMAN SALES OFFICE:

Tel: +49(0) 5193 972 1249

Fax: +49(0) 5193 972 1248

Email: volker@portec.com

Specifications

Belt Drive system: The conveyor belt is positively driven by an end roll mounted sprocket engaging a precision chain which is attached directly to the edge of the belt. The chain/belt system both powers and tracks the conveyor belt. No belt tension is required. This system is unaffected by changes in loading, belt tension, temperature and humidity. Even at high speeds, there are none of the problems associated with bottom V-guides and friction drive conveyors.

Motorized End Pulley: The Werner 114 mm diameter drive end pulley has an internal .37 kW motor. The motorized end pulley powers the belt drive sprocket and is cooled by two 15w fans. The motorized pulley is designed for use with an AC inverter.

Input Electrical Requirements: The .37 kW motorized pulley requires 1.0 amp 380/415v 3ph 50hz or 460v 3ph 60hz electrical input. The cooling fans require 220v 1ph 50hz or 115v 1ph 60hz power and can be powered by the optional Portec AC inverter.

Idler Roller: 63.5 mm diameter with sprocket and tension adjuster.

Belt Material: 2-ply black PVC with laced belt seams is standard. Because of the chain/belt drive system, a wide range of belt types are possible.

Frame Construction: 178 mm high all steel construction.

Available Belt Speeds: Standard gear ratios are available at .25, .42, 1.06, 1.38, & 1.81 m/sec (50 hz). Other belt speeds are available using the optional Portec AC inverter.