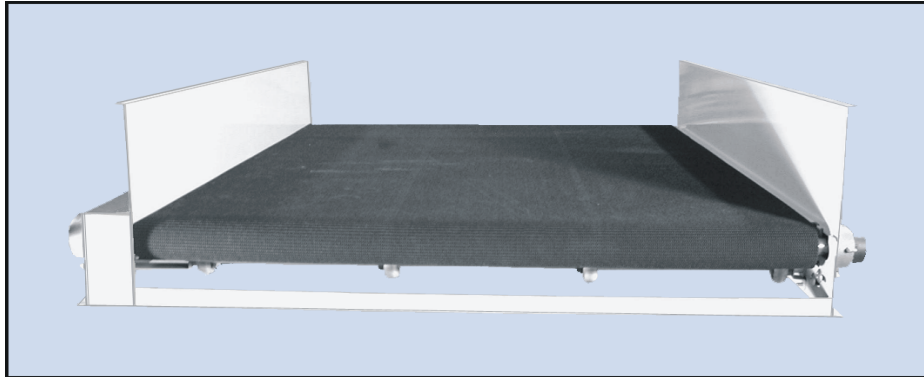
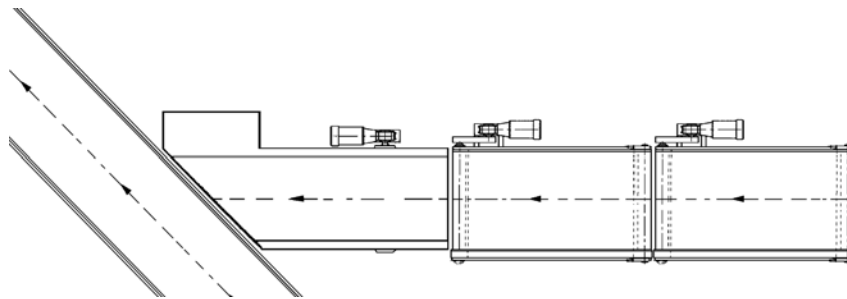


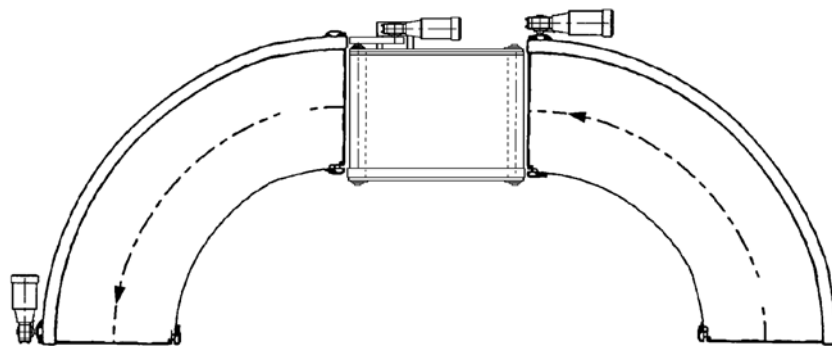
QUEUING • INDUCTION • METERING



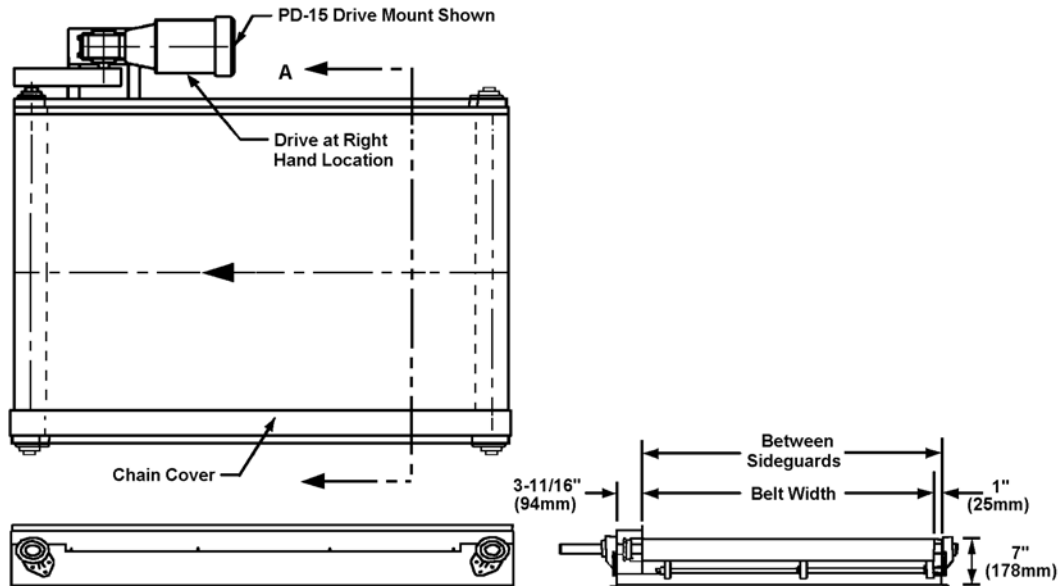
The **Queue-Flo™** belt conveyor from Portec Flomaster is a perfect solution whenever a positive-drive queuing conveyor or short, wide belt conveyor is required. The positive-drive system ensures belt tracking without special adjustments and rugged dependability under heavy duty induction or metering applications.



QUEUING AN INDUCTION ANGLE MERGE CONVEYOR



SHORT STRAIGHT CONVEYOR BETWEEN TWO BELT CURVES



Standard Features

- Available Conveying Widths: 7-61" width between sideguards
(6-60" exposed belt width)
 - Available Conveyor Lengths: 17.75-120"
 - Maximum Loading: 40 lbs./linear foot; 500 lbs. total load *
 - Maximum Belt Speed: 350 fpm *
 - Frame Height: 7"
 - Belt Drive System: #50 roller chain with attachment links
riveted to the edge of the belt
 - End Roll Sprockets: 50B17
 - End Roll Diameter: 3.2"
 - Standard Belt Material: Black SBR-Rough Top (Queuing)
Black Slip-Top (Accumulation)
 - Sideguards: Standard sideguards are 14 gauge steel.
Sideguards over 6" height will have a .75" outward facing top flange.
 - Belt Seams: Clipper lacing
- * **Contact factory for applications requiring higher loads or speeds.**

Queue-Flo™ from Portec Flomaster

Chain-driven belt conveyors have several advantages over friction-driven conveyors. Chain-driven conveyors have a positive-drive system that is **not** affected by the following:

- Sudden loading of the belt
- Temperature changes
- Improper belt tension
- Contamination on the belt
- Rugged environments

There is never any damaging end-roll spin caused by misadjustment. A chain-driven belt conveyor can withstand a considerable amount of neglect and abuse and still function. It is the perfect solution for a critical production line.