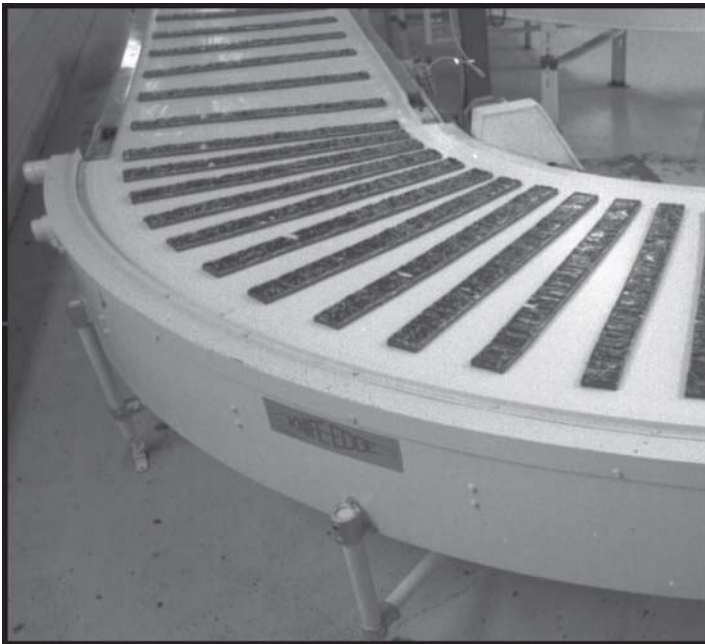


# KNIFE-EDGE®

CLOSE TRANSFER BELT CURVES



SMOOTH • SMALL • PRODUCT • HANDLING



Move Small Products...  
No Problem!

The Ultimate in Small  
Product Handling

Flomaster's® innovative Knife-Edge  
power curves allow the smooth  
handling of small products around  
curves.

All Knife-Edge Belt Power  
Curves have the following  
features:

Large range of arcs

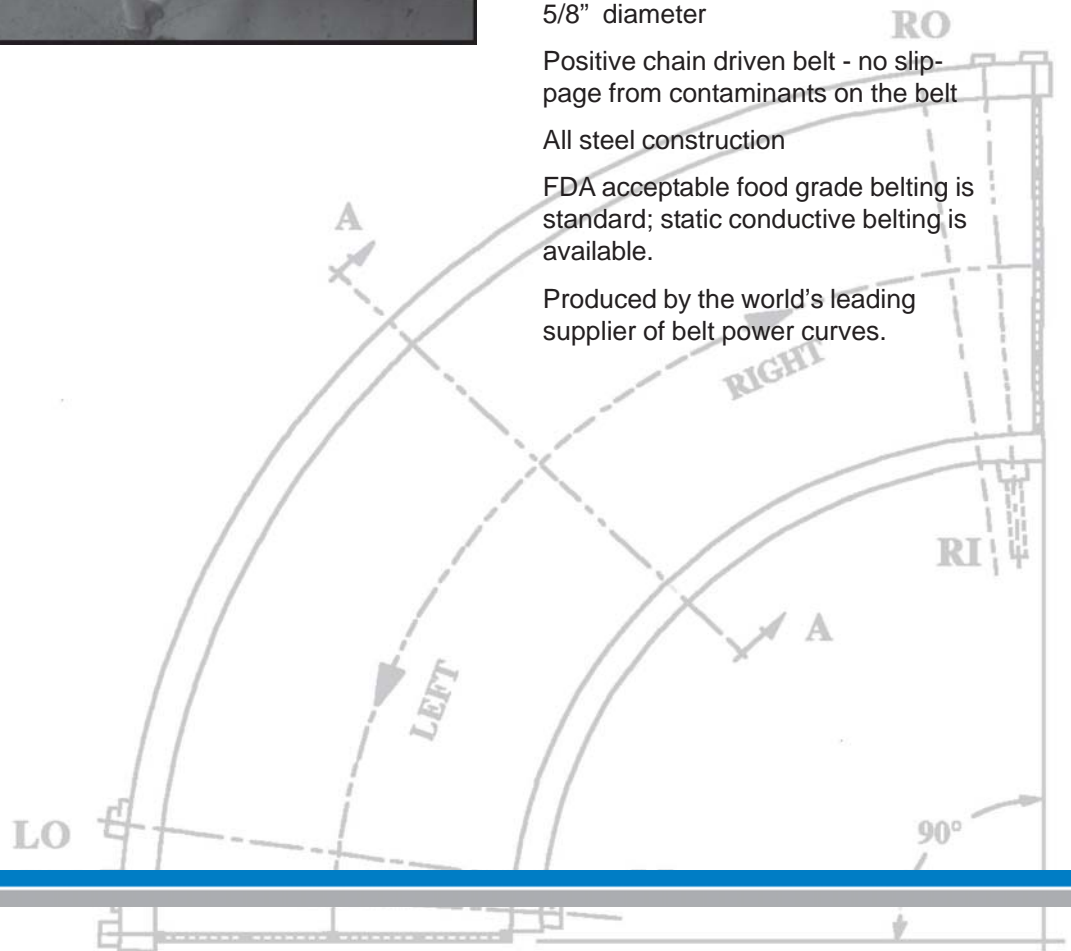
Small fixed position end rolls  
5/8" diameter

Positive chain driven belt - no slip-  
page from contaminants on the belt

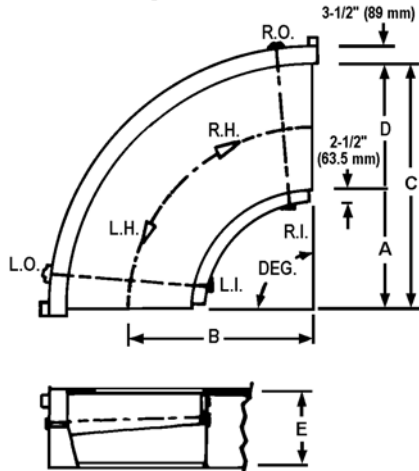
All steel construction

FDA acceptable food grade belting is  
standard; static conductive belting is  
available.

Produced by the world's leading  
supplier of belt power curves.



## Knife-Edge® Belt Power Curve



### Standard Features

**Conveyor drive system:** Positive-drive precision sidebow chain is attached to the edge of the conveyor belt to both drive and track the belt

**Belt drive chain:** #50 sidebow steel chain with belt attachment links; design load 640 lbs. (290 kg.); ultimate strength 5420 lbs. (2459 kg.); optional nickel plated chain for special applications

**Conveyor belt:** FDA approved 2-ply White Urethane with vulcanized endless seams. Optional belt materials are available for special applications.

**Frame construction:** Painted, welded steel; stainless steel/washdown construction is available for special applications

**Chain/Belt sprockets:** Steel beveled-tooth sprockets to match #50 sidebow chain. The drive sprocket is center mounted.

**Drive roll shafts:** Turned, ground and polished 1045 or 1144 stress-proof steel

**Drive roll bearings:** Precision, sealed for life, and fitted in a cast iron housing. Grease fitting for the self-aligning feature. Nickel-plated housings are available as an option.

**End rolls:** Fixed-position .625" (16 mm) diameter Nylatron® plastic rollers

**Paint:** DTM (direct to metal) gloss white enamel paint. A wide range of optional colors and paint types are available.

Std Model	Constant Dimensions inch/mm	Inside Radius A	Centerline Radius B	Belt Width D
KA-3710	C-47/1194	37/940	42/1067	10/254
3512	E-14/355	35/889	41/1041	12/305
3314		33/838	40/1016	14/356
3116	Std. shaft Ø	31/787	39/991	16/406
2918	1-3/16"	29/737	38/965	18/457
2720	or 30 mm	27/686	37/940	20/508
2522		25/635	36/914	22/559
2324		23/584	35/889	24/610
KB-4712	C-59/1499	47/1194	53/1346	12/305
4514	E-14/356	45/1143	52/1321	14/356
4316		43/1092	51/1295	16/406
4118	Std. shaft Ø	41/1041	50/1270	18/457
3920	1-3/16"	39/991	49/1245	20/508
3722	or 30 mm	37/940	48/1219	22/559
3524		35/889	47/1194	24/610
3326		33/838	46/1168	26/660
3128		31/787	45/1143	28/711
2930		29/737	44/1118	30/762
2732		27/686	43/1092	32/813
2534		25/635	42/1067	34/864
2336		23/584	41/1041	36/914
KC-7710	C-87/2210	77/1956	82/2083	10/254
7512	E-14/356	75/1905	81/2057	12/305
7314		73/1854	80/2032	14/356
7116	Std. shaft Ø	71/1803	79/2007	16/406
6918	1-3/16"	69/1753	78/1981	18/457
6720	or 30 mm	67/1702	77/1956	20/508
6522		65/1651	76/1930	22/559
6324		63/1600	75/1905	24/610
6126		61/1549	74/1880	26/660
5928		59/1499	73/1854	28/711
5730		57/1448	72/1829	30/762
5532		55/1397	71/1803	32/813
5334		53/1346	70/1778	34/864
5136		51/1295	69/1753	36/914
KC-4938	C-87/2210	49/1245	68/1727	38/965
4740	E-16/406	47/1194	67/1702	40/1016
4542		45/1143	66/1676	42/1067
4344	Std. shaft Ø	43/1092	65/1651	44/1117
4146	1-7/16"	41/1041	64/1626	46/1168
3948	or 35 mm	39/991	63/1600	48/1219

### Standard Models

The above list is only a small example of the model sizes available from Portec. There are 4 standard family sizes of Portec Knife-Edge Belt Power Curves based upon the outside conveying radius (C) and a range of conveying widths (F). Any conveying width within the available range and having one of the 3 standard outside conveying radii, would be considered a standard model. While Portec frequently designs and builds special radius belt curves, the standard models represent the best value and shortest production lead-time.

