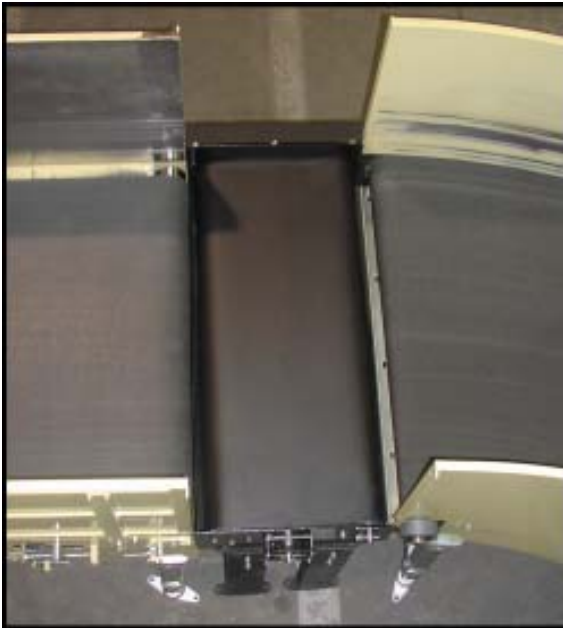


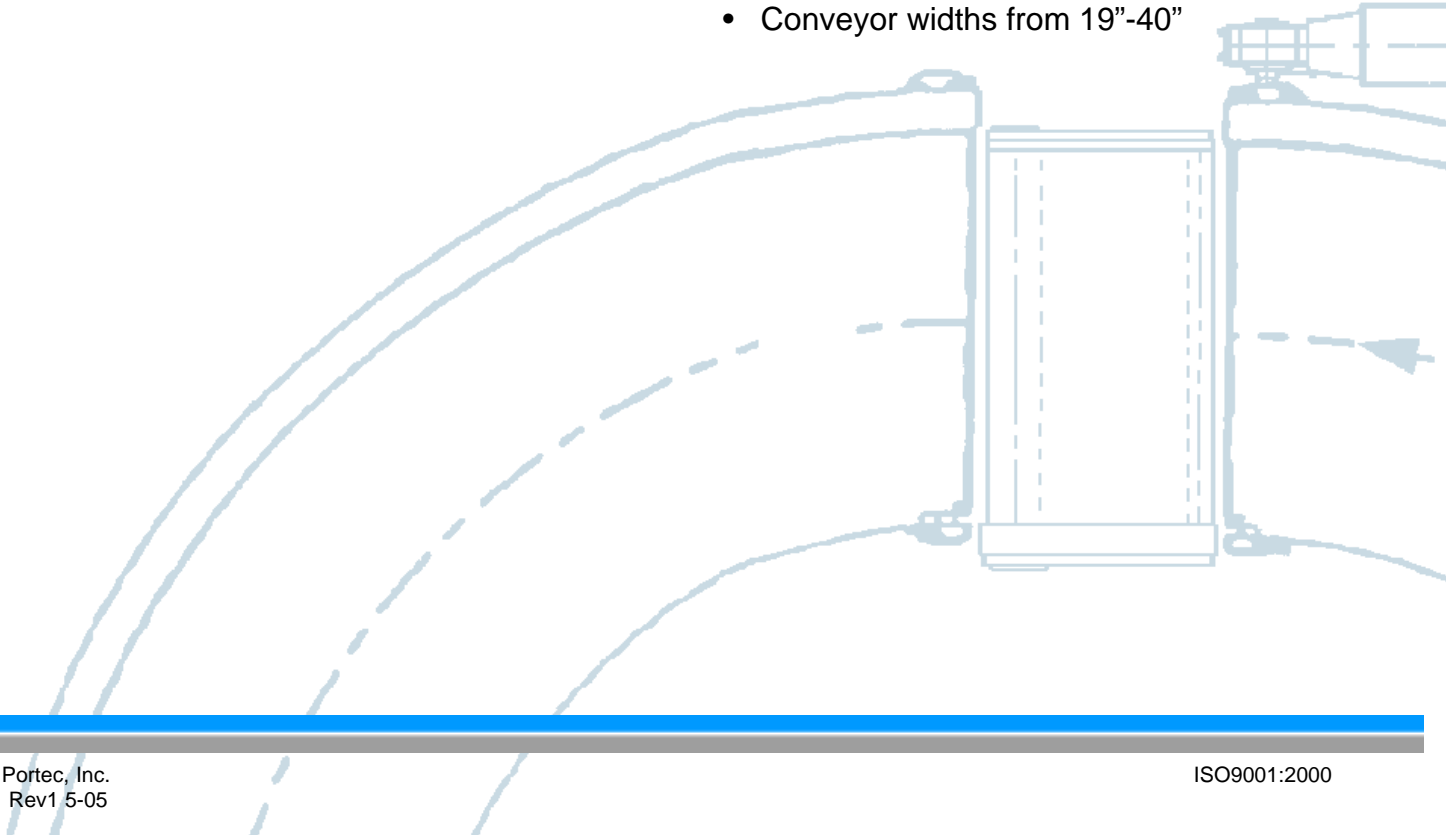
COMPACT • GAP • CONVEYOR



Fill the short wide gaps in your conveyor line...

The Com-Flo™ from Portec Flomaster is the perfect solution to fill the short wide gaps in your conveyor line or for queuing or singulating products.

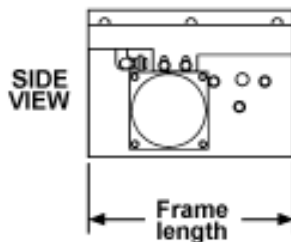
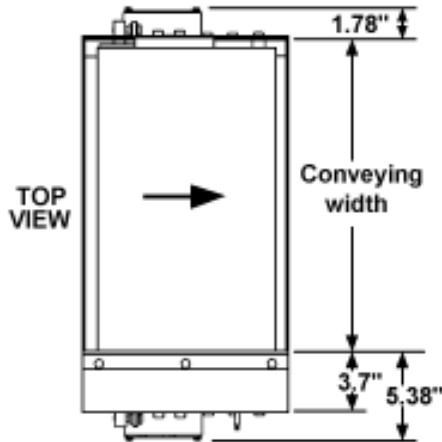
- Durable all-steel construction
- Portec's positive drive chain/belt system
- No end roll slip during cycling operations
- Low belt tension
- Internal motorized end pulley
- Available belt speeds up to 350 fpm
- No special belt material required
- Perfect belt tracking without a V-guide
- Conveyor lengths from 12.5"-24.5"
- Conveyor widths from 19"-40"



Model Dimensions

MODEL	Conveying Width	Frame Length
19CFL12.5	19"	12.5"
39CFL12.5	39"	12.5"
19CFL18	19"	18"
24CFL24	24"	24"
40CFL24	40"	24"

Note: The drive end roll with our standard .125" belt material is set back .675" from the frame end. The idler end roll with our standard .125" belt material is set back .849" from the frame end. The above list is only a small sample of the available model sizes from Portec. Contact Portec with your requirements.



DRIVE END VIEW



IDLER END VIEW

For more information, contact:

Portec Flomaster
 PO Box 589
 Cañon City, CO 81215-0589 USA
 Tel: (719) 275-7471
 Fax: (719) 269-3750
 Email: portec@portec.com
 Web: www.portec.com

Specifications

Belt Drive system: The conveyor belt is positively driven by an end roll mounted sprocket engaging a precision chain which is attached directly to the edge of the belt. The chain/belt system both powers and tracks the conveyor belt. No belt tension is required. This system is unaffected by changes in loading, belt tension, temperature and humidity. Even at high speeds, there are none of the problems associated with bottom V-guides and friction drive conveyors.

Motorized End Pulley: The Werner 4.5" diameter drive end pulley has an internal 1/2 hp motor. The motorized end pulley powers the belt drive sprocket and is cooled by two 15w fans. The motorized pulley is designed for use with an AC inverter.

Input Electrical Requirements: The 1/2 hp motorized pulley requires 1.0 amp 460/480v 3ph 60hz or 380/415v 3ph 50hz electrical input. The cooling fans require 115v 1ph 60hz or 220v 1ph 50hz power and can be powered by the optional Portec AC inverter.

Idler Roller: 2.5" diameter with sprocket and tension adjuster.

Belt Material: 2-ply black PVC with laced belt seams is standard. Because of the chain/belt drive system, a wide range of belt types are possible.

Frame Construction: 7" high all steel construction.

Available Belt Speeds: Standard gear ratios are available at 30, 50, 77, 128, 250, & 350 fpm (60 hz). Other belt speeds are available using the optional Portec AC inverter.