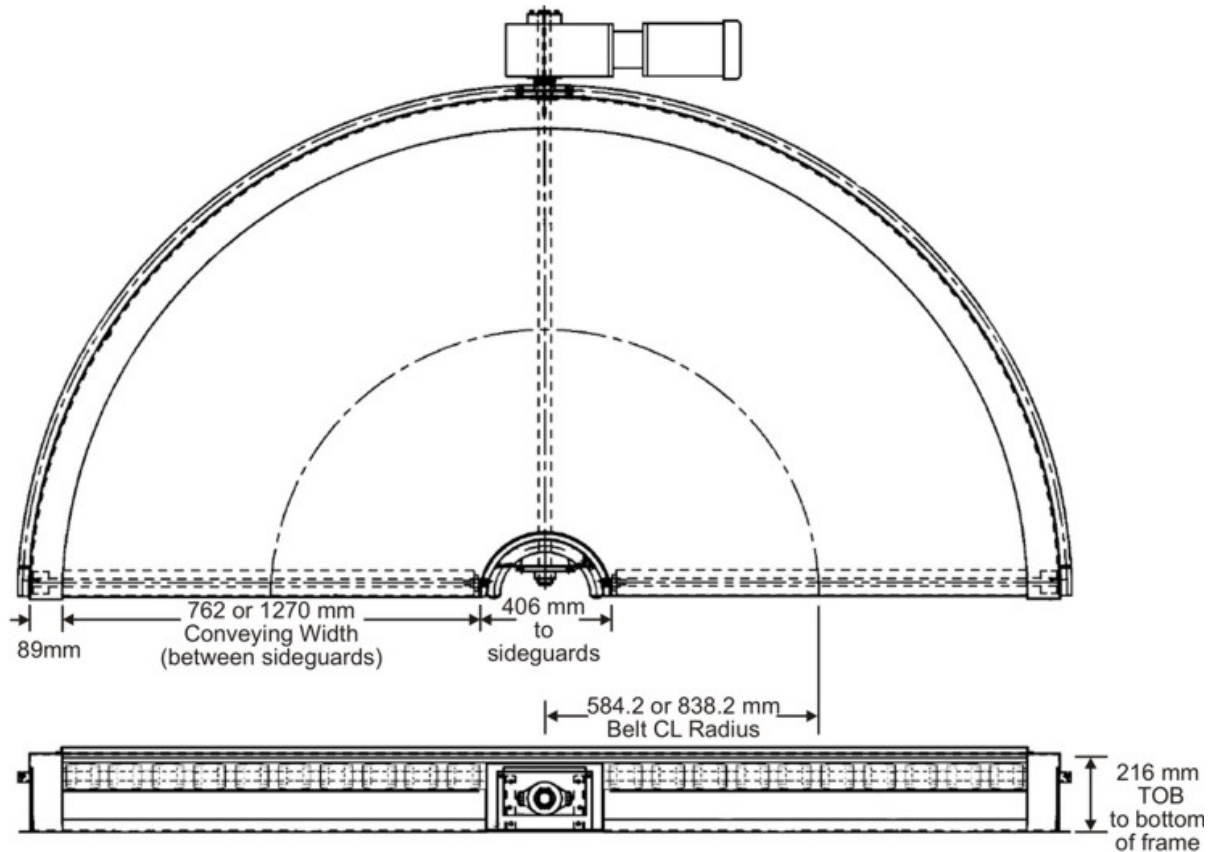


# Z-Turn® Compact 180° Curve Technical Specifications



## Standard Features:

### Model Sizes

8ZT30-180° (762 mm between sideguards)

8ZT50-180° (1270 mm between sideguards)

**Belting:** Heavy duty black PVC-OP is standard. A wide range of optional belt materials is available. Laced belt seams are standard for quick belt changes.

**Construction:** All-steel frame and slider bed.

**Drive System:** A unique center drive sprocket (patent pending) engages a precision sidebow chain that is attached directly to the outside edge of the belt. It is fully bi-directional and the drive can be mounted either on the inside or outside radius. This positive drive arrangement is unaffected by changes in loading, temperature, humidity, and foreign material getting between the bottom of the belt and the end rolls. Because the belt is merely a carrying surface and high belt tension is not required for operation of a chain-driven conveyor, belt life, as well as the integrity of the belt joints, is greatly enhanced.

**End Rolls:** The 76 mm diameter segmented end rolls are cylindrical for outstanding product transfers.

**Return Rolls:** Rubber tire-style return rollers have precision bearings for quiet operation and a long life.

**Paint:** Air-dry DTM enamel in one of four standard colors or a wide range of optional colors.

**Limits:** 60 kg/linear m loads and .86 m/s (52 m/min) at belt centerline are the maximum limits.