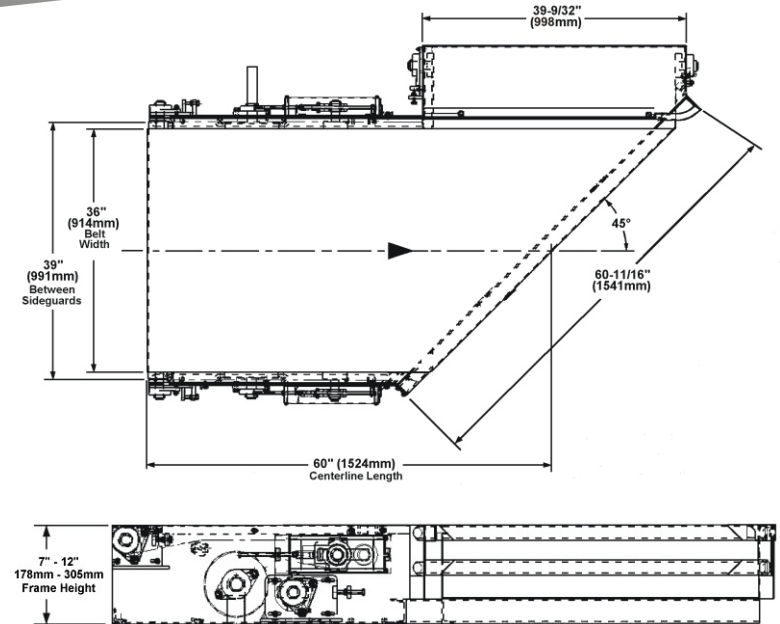
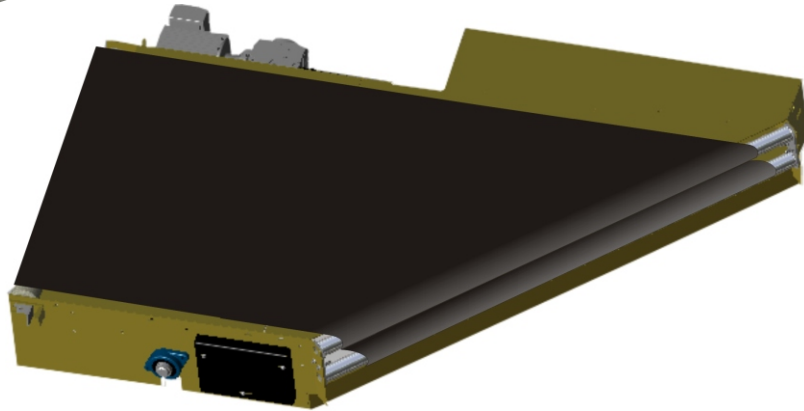


ANGLE-FLO®

Merging or Diverging Belt Conveyor



Feature/Benefits:

- Extremely quiet, smooth positive angular transfer
- Ideal for small parcels or airport baggage
- Rapid start / stop capability
- Sideguard exit transitions
- External bearings for easy maintenance
- Spring-tensioned drive roll self-adjusts for temperature and load variations
- All steel construction
- Spring-tensioned drive roll self-adjusts for temperature and load variations
- Drive roll contacts bottom side of belt and is less effected by contamination

Specifications:

- Loads up to 50 lbs./ft (75 kg/m)*
- Belt speeds up to 800 fpm / 4 mps
- Conveying widths: 13" to 63"
- Drive Roll: 152 - 203 mm diameter with molded & machined lagging
- Drive Shaft: 35 mm TGP 1045 keyed shaft
- Angle Bar: 47.6 mm polished steel tubing
- End & Take-Up Rolls: 89 mm crowned steel tubing with 30 mm shaft
- Snub Rolls: 89 mm straight steel tubing with 30 mm shaft
- Frame Construction: 3.42 mm (10 ga) side frame & removeable slider bed; 4.83 mm angle steel crossmembers
- Sideguard Construction: 1.89 mm (14 ga) steel with top and entry end flanges and exit transitions. Uni-strut channels for attaching electrical conduit

*Conveyor load capacity depends on conveyor size, motor position, accumulated loads and other factors.